

**GRANGE : Grade 80 Alloy Steel, Short Link Lifting Chain****AS2321 Compliant**

Code	Description
18300	6mm Grade 80 Short Link Lifting Chain
18301	7mm Grade 80 Short Link Lifting Chain
18302	8mm Grade 80 Short Link Lifting Chain
18304	10mm Grade 80 Short Link Lifting Chain
18307	13mm Grade 80 Short Link Lifting Chain
18310	16mm Grade 80 Short Link Lifting Chain

**GRANGE : Grade 80 Alloy Steel, Single / Double Oblong Links****AS3776 Compliant\***

Code	Description	Single	Double	W.L.L
25821	Grade 80 Single/Double Oblong Link Inside 95 x 51mm	6/7 mm	6mm	2.6 t
25824	Grade 80 Single/Double Oblong Link Inside 190 x 100mm	8mm	7mm	2.8 t
25823	Grade 80 Single/Double Oblong Link Inside 120 x 70mm	10mm	8mm	3.8 t
25826	Grade 80 Single/Double Oblong Link Inside 170 x 90mm	13mm	10mm	5.8 t
25828	Grade 80 Single/Double Oblong Link Inside 210 x 110mm	13mm	10mm	6.4 t
25831	Grade 80 Single/Double Oblong Link Inside 270 x 140mm	16mm	13mm	10.5 t
25834	Grade 80 Single/Double Oblong Link Inside 420 x 220mm	20/22mm	16mm	17 t
25836	Grade 80 Single/Double Oblong Link Inside 470 x 250mm	22/26mm	20mm	24.5 t

**GRANGE : Grade 80 Alloy Steel, Multi Master Oblong Links****AS3776 Compliant**

Code	Description	W.L.L
25751A	7mm Multi Master Oblong Link Top Link Inside 135 x 75mm	3.15 t
25752	8mm Multi Master Oblong Link Top Link Inside 160 x 90mm	4.25 t
25753	10mm Multi Master Oblong Link Top Link Inside 180x100mm	6.7 t
25754	13mm Multi Master Oblong Link Top Link Inside 200x110mm	11.2 t
25755	16mm Multi Master Oblong Link Top Link Inside 260x140mm	17.0 t
25757	20mm Multi Master Oblong Link Top Link Inside 350x190mm	26.5 t

**GRANGE : Grade 80 Alloy Steel, Hammer Type Connecting Links****AS3776 Compliant**

Code	Description
25201	6mm Connecting Link (Hammer Assembly)
25203	7/8mm Connecting Link (Hammer Assembly)
25204	10mm Connecting Link (Hammer Assembly)
25205	13mm Connecting Link (Hammer Assembly)
25206	16mm Connecting Link (Hammer Assembly)
25207	20mm Connecting Link (Hammer Assembly)



**GRANGE** : *Grade 80 Alloy Steel, Clevis Shortening Grab Hook With Wings*

**AS3776 Compliant**

Code	Description
25101	6mm Clevis Shortening Grab Hook With Wings
25102	7/8mm Clevis Shortening Grab Hook With Wings
25103	10mm Clevis Shortening Grab Hook With Wings
25104	13mm Clevis Shortening Grab Hook With Wings
25105	16mm Clevis Shortening Grab Hook With Wings
25106	20mm Clevis Shortening Grab Hook With Wings



**GRANGE** : *Grade 80 Alloy Steel, Clevis Shortening Clutches*

**AS3776 Compliant**

Code	Description
25182	7/8mm Clevis Shortening Clutch
25183	10mm Clevis Shortening Clutch
25184	13mm Clevis Shortening Clutch
25185	16mm Clevis Shortening Clutch
25186	20mm Clevis Shortening Clutch



**GRANGE** : *Grade 80 Alloy Steel, Clevis Self Locking Hooks*

**AS3776 Compliant**

Code	Description
25021	6mm Clevis Self Locking Hooks
25022	7/8mm Clevis Self Locking Hooks
25023	10mm Clevis Self Locking Hooks
25024	13mm Clevis Self Locking Hooks
25025	16mm Clevis Self Locking Hooks
25026	20mm Clevis Self Locking Hooks



**GRANGE** : *Grade 80 Alloy Steel, Clevis Sling Hook With Safety Catch*

**AS3776 Compliant**

Code	Description
25371	6mm Clevis Sling Hook With Safety Catch
25372	7/8mm Clevis Sling Hook With Safety Catch
25373	10mm Clevis Sling Hook With Safety Catch
25374	13mm Clevis Sling Hook With Safety Catch
25375	16mm Clevis Sling Hook With Safety Catch
25376	20mm Clevis Sling Hook With Safety Catch



**GRANGE : Grade 80 Alloy Steel, Eye Type Shortening Grab Hook With Wings**

**AS3776 Compliant**

Code	Description
25081	6mm Eye Type Shortening Grab Hook With Wings
25082	7/8mm Eye Type Shortening Grab Hook With Wings
25083	10mm Eye Type Shortening Grab Hook With Wings
25084	13mm Eye Type Shortening Grab Hook With Wings
25085	16mm Eye Type Shortening Grab Hook With Wings
25086	20mm Eye Type Shortening Grab Hook With Wings



**GRANGE : Grade 80 Alloy Steel, Eye Type Self Locking Hooks**

**AS3776 Compliant**

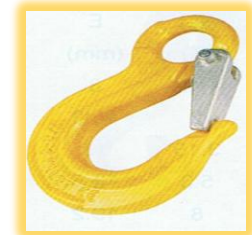
Code	Description
25001	6mm Eye Type Self Locking Hooks
25002	7/8mm Eye Type Self Locking Hooks
25003	10mm Eye Type Self Locking Hooks
25004	13mm Eye Type Self Locking Hooks
25005	16mm Eye Type Self Locking Hooks
25006	20mm Eye Type Self Locking Hooks



**GRANGE : Grade 80 Alloy Steel, Eye Type Sling Hook With Safety Latch**

**AS3776 Compliant**

Code	Description
25165	6mm Eye Type Sling Hook With Safety Latch
25166	7/8mm Eye Type Sling Hook With Safety Latch
25167	10mm Eye Type Sling Hook With Safety Latch
25168	13mm Eye Type Sling Hook With Safety Latch
25169	16mm Eye Type Sling Hook With Safety Latch
25170	20mm Eye Type Sling Hook With Safety Latch



**GRANGE : Grade 80 Alloy Steel, Eye Swivel Sling Hook With Safety Latch**

**AS3776 Compliant**

Code	Description
25092	7/8mm Eye Swivel Sling Hook With Safety Latch
25093	10mm Eye Swivel Sling Hook With Safety Latch
25094	13mm Eye Swivel Sling Hook With Safety Latch
25095	16mm Eye Swivel Sling Hook With Safety Latch
25096	20mm Eye Swivel Sling Hook With Safety Latch



**GRANGE** : *Grade 80 Alloy Steel, Eye Type Swivel Self Locking Hooks*

**AS3776 Compliant**

Code	Description
25041	6mm Eye Type Swivel Self Locking Hooks
25042	7/8mm Eye Type Swivel Self Locking Hooks
25043	10mm Eye Type Swivel Self Locking Hooks
25044	13mm Eye Type Swivel Self Locking Hooks
25045	16mm Eye Type Swivel Self Locking Hooks
25046	20mm Eye Type Swivel Self Locking Hooks



**GRANGE** : *Excavator Hook With Safety Latch (Weld on)*

Code	Description
25131	2 Tonne Weld On Excavator Hook With Safety Latch
25132	3 Tonne Weld On Excavator Hook With Safety Latch
25133	5 Tonne Weld On Excavator Hook With Safety Latch
25134	8 Tonne Weld On Excavator Hook With Safety Latch
25135	10 Tonne Weld On Excavator Hook With Safety Latch



**GRANGE** : *Grade 80 Alloy Steel, Single Leg Chain Assembly Tag*

**AS3775 Compliant**

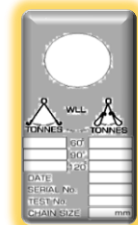
Code	Description
221	Universal Single Leg Blank Tag



**GRANGE** : *Grade 80 Alloy Steel, Multi Leg Chain Assembly Tag*

**AS3775 Compliant**

Code	Description
221M	Universal Multi Leg Blank Tag



**GRANGE** : *Grade 80 Alloy Steel, Spring Steel Ring For Mounting W.L.L Tags*

Code	Description
2000	Tag Ring



**GRANGE : Grade 80 Alloy Steel, Spare Part : Sling Hook Safety Latches**

Code	Description
25371P	6mm Sling Hook Safety Latch Kit
25372P	7/8mm Sling Hook Safety Latch Kit
25373P	10mm Sling Hook Safety Latch Kit
25374P	13mm Sling Hook Safety Latch Kit
25375P	16mm Sling Hook Safety Latch Kit
25376P	20mm Sling Hook Safety Latch Kit



**GRANGE : Grade 80 Alloy Steel, Spare Part : Trigger Kit For Self Locking Hooks**

Code	Description
25001P	6mm Trigger Kit For Self Locking Hook
25002P	7/8mm Trigger Kit For Self Locking Hook
25003P	10mm Trigger Kit For Self Locking Hook
25004P	13mm Trigger Kit For Self Locking Hook
25005P	16mm Trigger Kit For Self Locking Hook
25006P	20mm Trigger Kit For Self Locking Hook



**GRANGE : Grade 80 Alloy Steel, Pin & Stud Kits For Connecting Links**

Code	Description
25201S	6mm Pin & Stud Kit
25202S	7/8mm Pin & Stud Kit
25203S	10mm Pin & Stud Kit
25204S	13mm Pin & Stud Kit
25205S	16mm Pin & Stud Kit
25206S	20mm Pin & Stud Kit



**GRANGE : Grade 80 Alloy Steel, Load Pins For Clevis Hooks**

Code	Description
25021P	6mm Clevis Load Pin Kit
25022P	7/8mm Clevis Load Pin Kit
25023P	10mm Clevis Load Pin Kit
25024P	13mm Clevis Load Pin Kit
25025P	16mm Clevis Load Pin Kit
25026P	20mm Clevis Load Pin Kit



## **GRANGE** : Grade 80 Alloy Steel, Panel Clutches

AS3850-2003 Compliant

Code	Description
25251	1-1.3 tonne Panel Clutch
25252	1.5-2.5 tonne Panel Clutch
25253	3-5 tonne Panel Clutch
25254	6-10 tonne Panel Clutch



## **GRANGE** : Zinc Plated Lifting Eyebolts, Din 580 Standard

Code	Description
26151	6mm Lifting Eyebolts (Zinc Plated) WLL 70kg
26152	8mm Lifting Eyebolts (Zinc Plated) WLL 140kg
26153	10mm Lifting Eyebolts (Zinc Plated) WLL 230kg
26154	12mm Lifting Eyebolts (Zinc Plated) WLL 340kg
26156	16mm Lifting Eyebolts (Zinc Plated) WLL 700kg
26158	20mm Lifting Eyebolts (Zinc Plated) WLL 1.2 tonnes
26159	22mm Lifting Eyebolts (Zinc Plated) WLL 1.5 tonnes
26160	24mm Lifting Eyebolts (Zinc Plated) WLL 1.8 tonnes

Din 580 Compliant



## **GRANGE** : Zinc Plated Lifting Eyenuts, Din 582 Standard

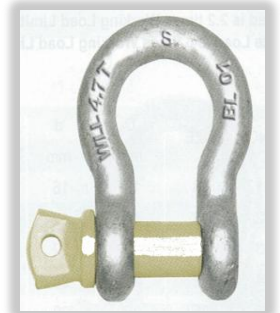
Code	Description
26201	6mm Lifting Eyenuts (Zinc Plated) WLL 70kg
26202	8mm Lifting Eyenuts (Zinc Plated) WLL 140kg
26203	10mm Lifting Eyenuts (Zinc Plated) WLL 230kg
26204	12mm Lifting Eyenuts (Zinc Plated) WLL 340kg
26206	16mm Lifting Eyenuts (Zinc Plated) WLL 700kg
26208	20mm Lifting Eyenuts (Zinc Plated) WLL 1.2 tonnes
26209	22mm Lifting Eyenuts (Zinc Plated) WLL 1.5 tonnes
26210	24mm Lifting Eyenuts (Zinc Plated) WLL 1.8 tonnes

Din 582 Compliant



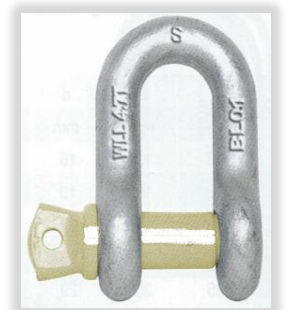
**GRANGE : Grade S Alloy Steel, Screw Pin Bow Lifting Shackles AS2741 Compliant**

Code	Description
20921	6mm Grade 'S' Screw Pin Bow Shackles WLL 500kg
20922	8mm Grade 'S' Screw Pin Bow Shackles WLL 750kg
20923	10mm Grade 'S' Screw Pin Bow Shackles WLL 1.0 tonne
20924	11mm Grade 'S' Screw Pin Bow Shackles WLL 1.5 tonnes
20925	13mm Grade 'S' Screw Pin Bow Shackles WLL 2.0 tonnes
20926	16mm Grade 'S' Screw Pin Bow Shackles WLL 3.2 tonnes
20927	19mm Grade 'S' Screw Pin Bow Shackles WLL 4.7 tonnes
20928	22mm Grade 'S' Screw Pin Bow Shackles WLL 6.5 tonnes
20929	25mm Grade 'S' Screw Pin Bow Shackles WLL 8.5 tonnes
20930	29mm Grade 'S' Screw Pin Bow Shackles WLL 9.5 tonnes
20931	32mm Grade 'S' Screw Pin Bow Shackles WLL 12.0 tonnes
20932	35mm Grade 'S' Screw Pin Bow Shackles WLL 13.5 tonnes
20933	38mm Grade 'S' Screw Pin Bow Shackles WLL 17.0 tonnes
20934	44mm Grade 'S' Screw Pin Bow Shackles WLL 25.0 tonnes
20935	51mm Grade 'S' Screw Pin Bow Shackles WLL 35.0 tonnes



**GRANGE : Grade S Alloy Steel, Screw Pin Dee Shackles AS2741 Compliant**

Code	Description
20901	6mm Grade 'S' Screw Pin Dee Shackles WLL 500kg
20902	8mm Grade 'S' Screw Pin Dee Shackles WLL 750kg
20903	10mm Grade 'S' Screw Pin Dee Shackles WLL 1.0 tonne
20904	11mm Grade 'S' Screw Pin Dee Shackles WLL 1.5 tonnes
20905	13mm Grade 'S' Screw Pin Dee Shackles WLL 2.0 tonnes
20906	16mm Grade 'S' Screw Pin Dee Shackles WLL 3.2 tonnes
20907	19mm Grade 'S' Screw Pin Dee Shackles WLL 4.7 tonnes
20908	22mm Grade 'S' Screw Pin Dee Shackles WLL 6.5 tonnes
20909	25mm Grade 'S' Screw Pin Dee Shackles WLL 8.5 tonnes
20910	29mm Grade 'S' Screw Pin Dee Shackles WLL 9.5 tonnes
20911	32mm Grade 'S' Screw Pin Dee Shackles WLL 12.0 tonnes
20912	35mm Grade 'S' Screw Pin Dee Shackles WLL 13.5 tonnes
20913	38mm Grade 'S' Screw Pin Dee Shackles WLL 17.0 tonnes
20914	44mm Grade 'S' Screw Pin Dee Shackles WLL 25.0 tonnes
20915	51mm Grade 'S' Screw Pin Dee Shackles WLL 35.0 tonnes



**GRANGE : Grade S Alloy Steel, Safety Pin Bow Shackles****AS2741 Compliant**

Code	Description
20961	13mm Grade 'S' Safety Pin Bow Shackles WLL 2.0 tonnes
20962	16mm Grade 'S' Safety Pin Bow Shackles WLL 3.2 tonnes
20963	19mm Grade 'S' Safety Pin Bow Shackles WLL 4.7 tonnes
20964	22mm Grade 'S' Safety Pin Bow Shackles WLL 6.5 tonnes
20965	25mm Grade 'S' Safety Pin Bow Shackles WLL 8.5 tonnes
20966	29mm Grade 'S' Safety Pin Bow Shackles WLL 9.5 tonnes
20967	32mm Grade 'S' Safety Pin Bow Shackles WLL 12.0 tonnes
20968	35mm Grade 'S' Safety Pin Bow Shackles WLL 13.5 tonnes
20969	38mm Grade 'S' Safety Pin Bow Shackles WLL 17.0 tonnes
20970	44mm Grade 'S' Safety Pin Bow Shackles WLL 25.0 tonnes
20971	51mm Grade 'S' Safety Pin Bow Shackles WLL 35.0 tonnes

**GRANGE : Grade S Alloy Steel, Safety Pin Dee Shackles****AS2741 Compliant**

Code	Description
20941	13mm Grade 'S' Safety Pin Dee Shackles WLL 2.0 tonnes
20942	16mm Grade 'S' Safety Pin Dee Shackles WLL 3.2 tonnes
20943	19mm Grade 'S' Safety Pin Dee Shackles WLL 4.7 tonnes
20944	22mm Grade 'S' Safety Pin Dee Shackles WLL 6.5 tonnes
20945	25mm Grade 'S' Safety Pin Dee Shackles WLL 8.5 tonnes
20946	29mm Grade 'S' Safety Pin Dee Shackles WLL 9.5 tonnes
20947	32mm Grade 'S' Safety Pin Dee Shackles WLL 12.0 tonnes
20948	35mm Grade 'S' Safety Pin Dee Shackles WLL 13.5 tonnes
20949	38mm Grade 'S' Safety Pin Dee Shackles WLL 17.0 tonnes
20950	44mm Grade 'S' Safety Pin Dee Shackles WLL 25.0 tonnes
20951	51mm Grade 'S' Safety Pin Dee Shackles WLL 35.0 tonnes





